



WHOLE
CURE

Community Building & Fidelity Program via Utility Token

*Revolutionizing Global Health & Wellness Through Holistic
Healthcare Centers*

2025

WHOLE CURE LTD

Company Number: 15935000

Registered Office: Flat 2 Top Floor, 380a Chiswick High Road, London, England, W4 5TF

Website : <https://wholecure.co.uk/>



Table of Contents

I. Why – Our Purpose & Vision

- Core Beliefs
- Mission & Values
- Community Impact
- Healthcare Revolution Vision

II. How – Our Approach

- Holistic Treatment Philosophy
- Technology Integration Strategy
- Community-Driven Governance (DAO)
- Token-Based Ecosystem

III. What – Implementation & Operations

- Business Model
- Services & Treatments
- Market Analysis
- Token Economics
- Technology Infrastructure
- Implementation Timeline

IV. Technical Framework

- Team & Leadership
- Risk Analysis & Mitigation
- Investment Structure
- Legal & Compliance
- Annex 1 : Proposal framework
- Annex 2 : DAO benefits
- Annex 3 : Insurance





I. WHY

OUR PURPOSE

Our Vision

To transform global healthcare by creating a revolutionary ecosystem where cutting-edge science meets ancient wisdom, making premium healthcare accessible to all. We envision a world where health and wellness transcend traditional boundaries, treating not just symptoms but nurturing the mind, body, and soul.

Our immediate focus is on establishing and expanding our presence in the UK and Lebanon through strategic property acquisition and operational excellence. These two locations were selected with care to embody the diversity of our vision: London as a global hub for cutting-edge healthcare and medical tourism, and Lebanon as a serene retreat fostering holistic healing through its rich natural landscapes and cultural heritage.

The Healthcare Challenge

- Traditional healthcare systems often prioritize treating symptoms over causes.
- Premium health services remain inaccessible to many.
- Disconnect between modern technology and holistic approaches.
- Lack of community involvement in healthcare evolution.
- Limited access to integrated wellness solutions.

Our Mission

- Unite advanced medical technology with holistic healing wisdom.
- Create accessible, comprehensive treatment centers globally.
- Build strong, engaged healthcare communities.
- Empower individuals in their health & well-being journey.
- Pioneer new standards in medical tourism.
- Transform healthcare delivery through community participation.

Community Impact

- Democratizing access to premium healthcare.
- Creating wellness-focused communities.
- Empowering individuals through health education.
- Fostering global healing connections.
- Building sustainable healthcare ecostructures.

II. HOW

OUR APPROACH

WholeCure's mission is grounded in innovation and holistic practices, combining advanced technologies with community-driven care to redefine global healthcare. Our ecosystem is built on three core pillars:

- 1 State-of-the-art Health Centers in strategic global locations**
- 2 Advanced medical staffs and technologies with comprehensive treatment systems**
- 3 WholeCure Token (WHC) - a blockchain-based utility token for community building and fidelity program**



TECHNOLOGY INTEGRATION STRATEGY

Holistic Treatment Philosophy

We integrate:

- Advanced medical technologies
- Traditional healing wisdom
- Preventive care approaches
- Online health & wellness services
- Comprehensive wellness programs
- Community-driven healing

Medical Technologies

- Hyperbaric oxygen chambers
- Colon cleansing systems
- Royal Rife technology
- IV drip treatments
- Ozone therapy systems
- Thermal imaging
- Digital X-rays & Ultrasound
- Advanced diagnostics
- Digital health platforms

BLOCKCHAIN & COMMUNITY GOVERNANCE



BLOCKCHAIN INFRASTRUCTURE

- **Platform:** minima.global
- **Smart Contracts:** Utilizing advanced blockchain encryption technology to ensure secure, automated, and transparent execution of all transactions and benefits distribution while protecting user data and privacy through multi-layer security protocols.
- **Digital Wallet:** Self-custodial blockchain wallet enabling users to securely store, manage, and control their WholeCure Tokens and associated benefits, with full ownership and privacy protection.
- **Trading Platform:** Peer-to-peer decentralized marketplace (DEX) enabling secure token transactions between community members, with automated price discovery and transparent execution.

COMMUNITY GOVERNANCE

Our Decentralized Autonomous Organization (DAO) empowers token holders to actively shape the ecosystem by enabling them to:

- **Propose Service Improvements:** Share innovative ideas and solutions to enhance the quality and efficiency of services.
- **Participate in Decision-Making:** Engage in transparent voting processes to drive critical decisions affecting the community.
- **Shape Community Programs:** Collaborate on initiatives that foster growth, inclusivity, and shared values within the ecosystem.
- **Guide Expansion Strategies:** Influence the direction and scope of new opportunities and geographic growth.
Influence Development Priorities: Help prioritize technological advancements and project milestones to align with the community's vision.
- The DAO ensures that every token holder has a voice, creating a collaborative, democratic, and dynamic community-driven governance structure.

III. WHAT

OUR IMPLEMENTATION

Health Center Operations

Advanced Treatment Center

The flagship centers in London and Lebanon set new standards for health and wellness, blending cutting-edge medical technologies with holistic care to create healing environments.

London: A global leader in healthcare, the London center delivers advanced treatments for urban populations and international medical tourists in a high-tech setting.

Lebanon: Located in Mount Lebanon's serene landscapes, this center offers holistic healing and advanced therapies, serving as a retreat for physical and emotional renewal while promoting sustainable wellness tourism.

Both centers feature state-of-the-art facilities, luxurious recovery spaces, and wellness areas, combining modern science with ancient wisdom. They also serve as hubs for research, development, and community engagement, providing comprehensive health benefits.



Core Services

1. Medical Services

- Advanced diagnostic treatments
- Preventive care programs
- Chronic disease management
- Specialized therapies
- Dermatology & Skin Care
- Psychotherapy & Psychology
- Physiotherapy & Chiropractic
- Cardiologist Clinic
- Ophthalmology Clinic
- Otolaryngology Clinic
- Dentistry & Maxillofacial Surgery

2. Holistic Treatments

- Acupuncture
- Biofield Tuning
- Homeopathy
- Healing Modalities
- Live Blood Analysis
- Sensory Deprivation Tank
- Cryotherapy
- Massage Therapy

3. Additional Facilities

- Oxygen Bar
- Recovery Areas
- Organic Store and Cafe
- Laboratory Services
- Diagnostic Center
- Nature and Animal Interaction Programs

4. Wellness Programs

- Personalized nutrition plans
- Fitness and rehabilitation
- Mental wellness support
- Stress management
- Community healing circles

5. Medical Tourism Services

- International patient coordination
- Premium accommodation
- Transportation services
- Multilingual support
- Comprehensive care packages



TOKEN ECONOMICS

WholeCure Token (WHC) Overview

- Max Supply: **1,000,000** tokens
- Platform: minima.global
- Type: Utility Token
- Purpose: Community building and service access

Token Distribution

1. Team Allocation: **10%** WHC
2. Private Network Sale: **10%** WHC at £0.60
3. Public Sale: **60%** WHC at £0.75
4. Partnership Reserve: **10%** WHC
5. Community Growth Program: 10% WHC

Vesting (*Period of wait before use of token is possible*)– All tokens can be used for services as soon as services open– All tokens can be sold on secondary market through Whole Cure Mise En Relation smartcontract after 3 month of London Center opening.

Use of Funds

1. Augmented token fundraising strategy (token marketing) : **10%**
2. Operating Capital (staff salaries, patient acquisition) : **40%**
3. Medical technology & Digital infrastructure (blockchain tools, DAO, smartcontracts...): **30%**
4. Legal & Administration : **10%**
5. Reserve : 10%
- 6.

Secondary Market

Token holders may:

- Trade tokens peer-to-peer
- Exchange tokens on approved platforms
- Transfer benefits to family members
- Gift tokens to others
- Accumulate tokens for enhanced benefits

Token Utility & Benefits



Bronze Tier **(100+ tokens)**

- 20% service discount
- Priority booking rights
- Fast-track appointments
- Extended consultations
- Annual health assessments



Silver Tier **(500+ tokens)**

Bronze Tier +:

- Monthly oxygen therapy
- Quarterly nutrition consultation
- Wellness workshops access
- Educational seminars
- Personalized wellness plans



Gold Tier **(2000+ tokens)**

Silver Tier +:

- Exclusive retreat access
- Priority program registration
- Seasonal workshops
- Healing circles participation
- Community activities



Platinum Tier **(5000+ tokens)**

Gold Tier +:

- Global facility access
- Cross-border coordination
- Multi-center privileges
- Travel health services

Important Notes

The WholeCure Token (WHC) is designed as a utility token, offering access to benefits and services without any characteristics of investment or ownership. Below are key clarifications and guidelines:

1. Token Clarification

- WHC is solely a utility token, not associated with dividends, profit-sharing, or ownership rights in WholeCure.
- Its value is derived exclusively from the benefits and services it unlocks.

2. Trading Information

- WHC transactions are limited to secondary markets and peer-to-peer exchanges. The company does not offer buyback programs.
- Token value is determined by utility demand, with no guaranteed returns for buyers.

Token Burning System

- Tokens are permanently removed from circulation upon usage.
- This system ensures transparency through blockchain, reduces supply over time, and incentivizes early adoption by creating a natural timeline for the fidelity program.

3. Benefit Terms

- Access to benefits is subject to availability and applicable terms and conditions. Usage limits and modifications may be implemented based on business needs.
- Service availability depends on the number of tokens held.
- This structure emphasizes the utility-based nature of the token, allowing holders to derive value through service usage and secondary market trading based on demand.

4. Investment Opportunity

For those seeking equity in WholeCure, the company offers traditional investment opportunities:

- SEIS/EIS Eligible Investment for tax-efficient options.
- Compatibility with Advanced Subscription Agreements.
- Adherence to a robust Corporate Governance Framework.
- Full compliance with UK Regulations.

For more information, request our Investor Pitch Deck.



Implementation Timeline

Phase 1: Q1 2025

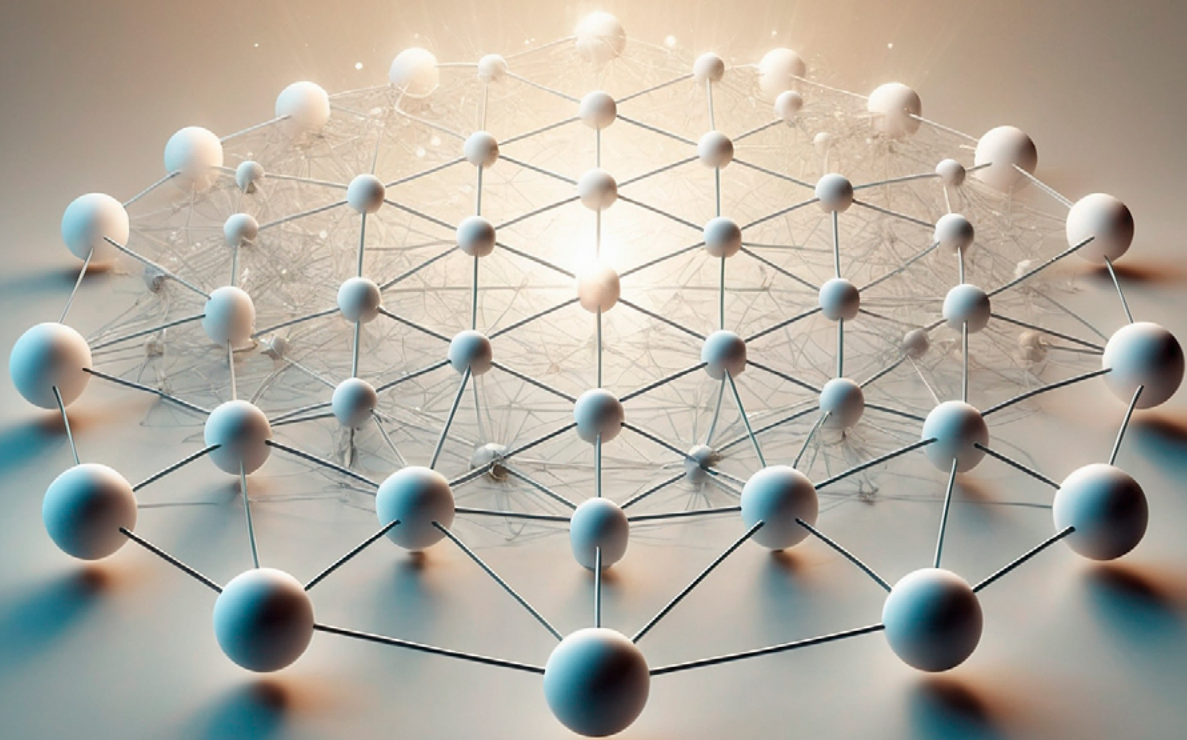
- Complete funding round
- Launch token private and public sale
- Establish London center and Lebanon centers
- Begin core operations

Phase 2: 2025

- Optimize operations
- Expand services
- Launch DAO
- Begin medical tourism

Phase 3: 2026–2027

- Global expansion
- Additional centers
- Enhanced services
- Community growth



IV. TECHNICAL FRAMEWORK

WholeCure leverages advanced technological infrastructure to streamline operations, enhance transparency, and empower community participation. By integrating blockchain technology with modern management tools, we deliver secure and efficient healthcare solutions.

BLOCKCHAIN INFRASTRUCTURE

Our blockchain technology enables:

- Secure and transparent transaction processing.
- Automation through smart contracts.
- A token burning system to regulate supply and maintain value.
- Decentralized community governance.
- Cross-border capabilities for global accessibility.

Management Systems

To ensure operational efficiency, our systems integrate:

- Comprehensive patient records and inventory management.
- Seamless appointment scheduling.
- Real-time treatment monitoring for quality assurance.

Token Mechanics

The WholeCure Token (WHC) provides value and transparency through:

- A service-based token burning mechanism.
- Automated benefit distribution.
- Tier-based access to exclusive services.
- Community voting to guide future developments.

TEAM & LEADERSHIP



Executive Directors



Fayez Moukarim
CEO



Victor Larde
Web3 CTO



Dr. Ramzia El-Annan
CMO



Dr. Wafaa Al Zayat
Chief Media Officer



Dr. Christina Maria Nagtegaal
Head of Coordination



Dr. Nadia Hamade-Saad
Head of Protocol Officer

Medical Leadership

Dr. Antoine Hage – Biomedical Engineer & Equipment Consultant
Dr. Nidal Makarem – Head of Dentistry & Center Management
Dr. Halim El Ammouy – Head of Surgery and Maxillofacial
Dr. Lama Gharzeddine – Head of Nutrition & Holistic Treatment
Dr. Rania Kheir – Head of Psychology & Psychotherapy
Dr. Amin Kazzi – Liaison with American University Beirut
Dr. Makram Ayache – Biomedical Engineer & Advanced Technologies

RISK ANALYSIS & COMPLIANCE

WholeCure's risk management framework is designed to proactively identify, assess, and mitigate potential challenges across operational, market, and token-related areas. By addressing these risks comprehensively, we ensure the stability and sustainability of our operations and ecosystem.



1. Operational Risks

Operational risks are managed through robust strategies to maintain efficiency and reliability:

- **Equipment & Technology:** Ensuring medical equipment reliability, minimizing downtime, securing data backups, and addressing system integration challenges and cybersecurity threats.
- **Staff & Services:** Focusing on recruitment and retention, staff training, service quality, patient satisfaction, and emergency preparedness.
- **Supply Chain:** Mitigating risks from procurement delays, disruptions, vendor management, inventory optimization, and political or cross-border challenges.

2. Market Risks

Adapting to market dynamics is essential for maintaining competitiveness:

- **Competition:** Addressing challenges from new market entrants, technological advancements, service differentiation, pricing pressures, and market share protection.
- **Economic Factors:** Preparing for currency fluctuations, economic downturns, policy changes, insurance trends, and shifts in medical tourism demand.
- **Regional Considerations:** Adjusting to local market conditions, cultural needs, and regional healthcare regulations.

3. Token-Related Risks

Mitigating token-related risks ensures the integrity and functionality of the blockchain ecosystem:

- **Technical Risks:** Safeguarding against vulnerabilities in smart contracts, ensuring blockchain stability, securing wallets, and managing system upgrades.
- **Market Dynamics:** Monitoring token price volatility, trading volume fluctuations, secondary market liquidity, and token utility adoption, while fostering strong community engagement.

COMPLIANCE FRAMEWORK

WholeCure's compliance framework ensures adherence to industry standards, regulatory requirements, and ethical practices, safeguarding both healthcare services and token operations. By addressing healthcare and token compliance separately, we maintain transparency and reliability across all aspects of our ecosystem.



1. Healthcare Compliance

We prioritize patient safety and quality in healthcare through strict adherence to regulations and protocols:

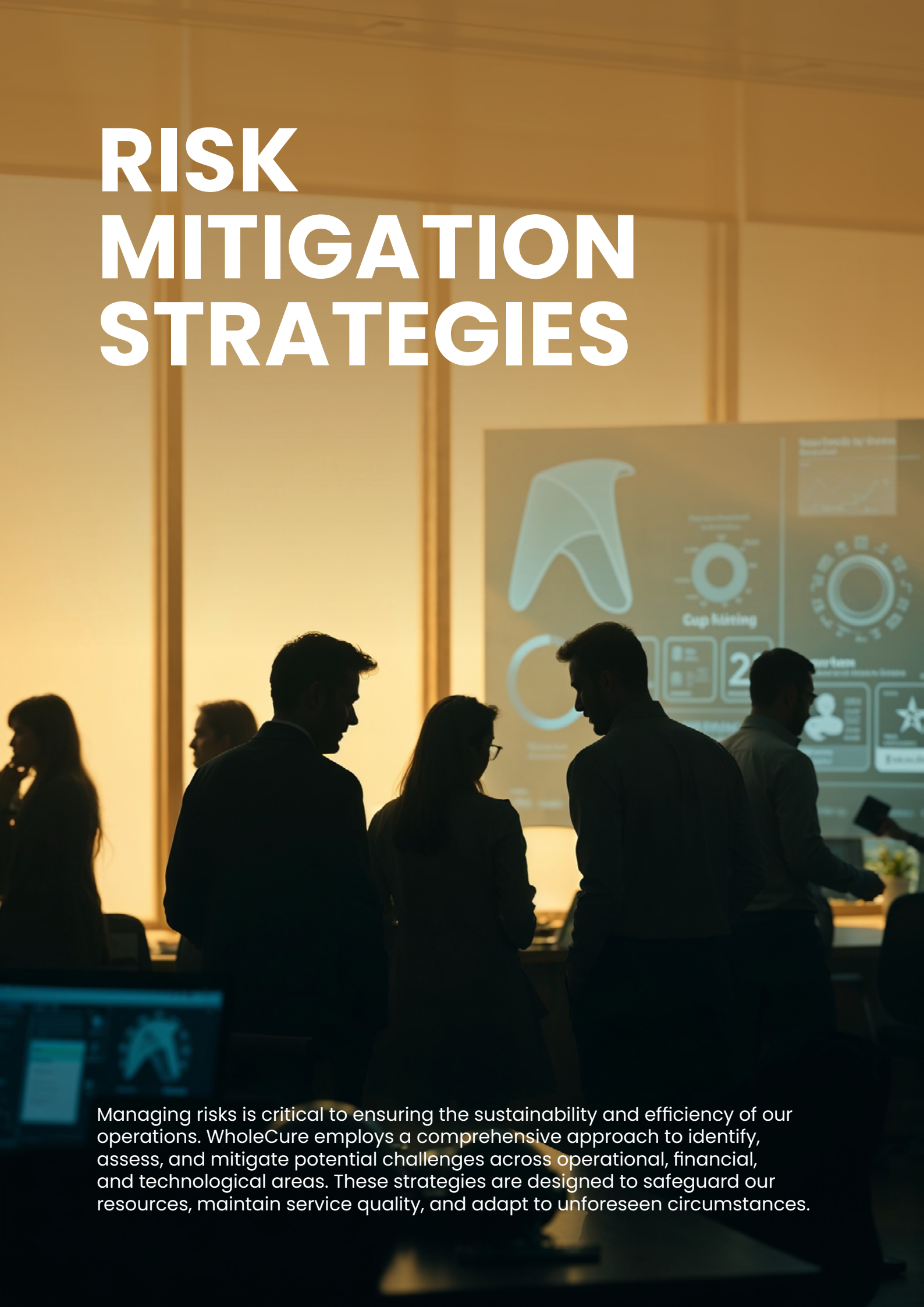
- **Medical Regulations:** Standards for clinical practices, patient safety, medical devices, facility licensing, and professional certifications.
- **Patient Protection:** Measures for data privacy (GDPR/HIPAA), informed consent, records management, rights protection, and complaint resolution.
- **Quality Assurance:** Implementation of treatment protocols, service standards, facility management, staff qualifications, and emergency preparedness.

2. Token Compliance

Our token operations align with financial and international regulations to ensure secure and transparent transactions:

- **Regulatory Status:** Compliance with utility token classifications, non-security attributes, trading restrictions, and benefit distribution rules.
- **Financial Compliance:** Adherence to AML, KYC, transaction monitoring, financial reporting, and tax obligations.
- **International Considerations:** Management of cross-border transactions, multi-jurisdiction compliance, sanctions, currency controls, and reporting requirements.

RISK MITIGATION STRATEGIES



Managing risks is critical to ensuring the sustainability and efficiency of our operations. WholeCure employs a comprehensive approach to identify, assess, and mitigate potential challenges across operational, financial, and technological areas. These strategies are designed to safeguard our resources, maintain service quality, and adapt to unforeseen circumstances.

1. Operational Mitigation

We prioritize robust systems and policies to ensure smooth operations:

- **Insurance Coverage:** Protection against liabilities, property damage, business interruptions, cyber risks, and employee-related issues.
- **Quality Control:** Implementation of regular audits, performance monitoring, staff training, emergency drills, and standardized procedures.

2. Financial Mitigation

Our financial strategies focus on stability and resilience:


- **Revenue Protection:** Diversified income streams, reserve funds, currency hedging, and secure payment guarantees.
- **Cost Management:** Tight budget controls, resource optimization, efficiency programs, and strategic vendor negotiations.

3. Technology Protection

Advanced security and reliability measures safeguard our technological infrastructure:

- **Security Measures:** Multi-layer encryption, access controls, regular audits, and incident response plans to protect sensitive data.
- **System Reliability:** Redundant systems, robust backup protocols, recovery procedures, and proactive performance monitoring.

COMPLIANCE MANAGEMENT



Compliance Manual

Ensuring compliance is at the core of WholeCure's operations, safeguarding ethical standards, regulatory adherence, and operational transparency. Through robust governance structures, meticulous documentation, and a commitment to continuous improvement, we aim to maintain trust and excellence in every aspect of our services.

Governance Structure

WholeCure's governance framework ensures accountability and regulatory adherence through:

- An Oversight Committee comprising board supervision, compliance officers, legal counsel, and external auditors.
- Comprehensive reporting systems for monitoring compliance, managing incidents, and maintaining audit trails.

Documentation and Procedures

Our structured approach to documentation supports consistent and efficient operations:

- A well-defined policy framework with operational guidelines, compliance manuals, and update procedures.
- Reliable record-keeping systems to manage treatment records, transaction logs, and compliance documentation.

Continuous Improvement

We are committed to evolving and refining our processes to meet changing demands:

- Regular reviews of risks, policies, and procedures, incorporating feedback from staff and patients.
- An adaptation process focused on market trends, technological advancements, regulatory updates, and community-driven improvements.
- This expanded risk analysis and compliance framework provides a comprehensive overview of our approach to risk management and regulatory compliance, ensuring the sustainable operation of our health centers and token ecosystem.

Contact Information

Fayez Moukarim

Chief Executive Officer

WHOLE CURE LTD

Flat 2 Top Floor, 380a Chiswick High Road
London, England, W4 5TF

Email: fayez@wholecure.co.uk

Tel: +961 7415267 / +44 7990 952199

LinkedIn <https://www.linkedin.com/in/fayez-moukarim3336669999/>

ANNEX 1

DAO Proposal Framework

The WholeCure DAO enables active community participation in decision-making, organizing proposals into categories and following a sociocratic process to ensure inclusivity and transparency.

Proposal Types

1. Service Enhancements:

- New treatments and improvements to existing ones.
- Quality optimization and adoption of new technologies.

2. Community Benefits:

- New token utilities.
- Reward programs and strategic partnerships.
- Educational initiatives for members.

3. Operational Improvements:

Facility and process upgrades.
User experience enhancements and technology adoption.

4. Collaboration Initiatives:

- Strategic partnerships, platform integration, and service expansion.

Sociocratic Decision Process

- 1. Ideation:** Community members submit and refine proposals.
- 2. Discussion:** Proposals are evaluated through debate, expert input, and feasibility analysis.
- 3. Consent:** Proposals are reviewed, adjusted, and approved by a decision-making circle.
- 4. Implementation:** Action plans are developed, resources allocated, and progress monitored.

Framework Purpose

This model ensures collaborative, transparent, and effective decisions aligned with the community's needs.

ANNEX 2

DAO Benefits

The WholeCure DAO fosters an inclusive and transparent governance structure, empowering the community to drive innovation and ensure sustainable growth. Key benefits include:

1. Community Empowerment

- Influence on ecosystem development through direct participation.
- Shared accountability for the success of initiatives.
- Collective problem-solving to address challenges.
- Encouragement of innovation from diverse perspectives.

2. Transparency

- Open and inclusive decision-making processes.
- Clear documentation of decisions and proposals.
- Effective tracking of resources and allocation.
- Regular progress reporting for accountability.

3. Continuous Improvement

- Feedback loops to incorporate insights from the community.
- Iterative development to refine strategies and solutions.
- Innovation driven by community contributions.
- Governance that adapts to evolving needs and contexts.

4. Reward Mechanisms

- Rewards for submitting impactful proposals.
- Bonuses for successful implementation of initiatives.
- Incentives for active participation in the DAO.
- Recognition for significant achievements within the community.

ANNEX 3

Insurance

Insurance Innovation

WholeCure offers a revolutionary health insurance model that removes traditional barriers, providing comprehensive and inclusive coverage. This innovation bridges gaps in current healthcare systems and aligns with our holistic approach.

Key Features

1. Inclusive Coverage

- Acceptance of pre-existing conditions.
- No exclusions for specific diseases.
- Coverage for both conventional and holistic treatments.
- Valid across all WholeCure centers worldwide.
- Integration with medical tourism services.

2. Global Healthcare Access

- Coverage at any WholeCure facility.
- Cross-border medical services and international emergency support.
- Simplified claims process with direct billing.

3. Comprehensive Treatment Plans

- Conventional and advanced technology procedures.
- Holistic therapies and preventive care programs.
- Recovery and rehabilitation services.

4. Membership Tiers

- **Bronze Package:** Basic coverage, standard rooms, core services.
- **Silver Package:** Enhanced coverage, premium rooms, advanced treatments, limited holistic therapies, transport services.
- **Gold Package:** Comprehensive coverage, VIP access, priority service, full holistic treatments, family options.

Innovative Features

1. Blockchain Integration

- Smart contract-based claims processing
- Transparent coverage verification
- Automated payment systems
- Immutable treatment records
- Real-time policy management

2. Token Holder Benefits

- Premium discounts for WHC holders
- Priority claim processing
- Enhanced coverage limits
- Reduced deductibles
- Exclusive wellness programs

3. Cross-Border Coverage

- Seamless international treatment access
- Standardized care protocols
- Multi-currency payment options
- International medical record access
- Global provider network

Risk Management

1. Underwriting Innovation

- Advanced risk assessment algorithms
- Holistic health evaluation
- Preventive care incentives
- Community health metrics
- Sustainable pricing models

2. Cost Control Measures

- Integrated care pathways
- Prevention-focused programs
- Technology-enabled monitoring
- Efficient resource allocation
- Network optimization

3. Quality Assurance

- Standardized treatment protocols
- Outcome monitoring
- Patient satisfaction tracking
- Provider performance metrics
- Continuous improvement programs

Insurance Technology Platform

1. Digital Infrastructure

- Mobile app for policy management
- Real-time claim status tracking
- Digital health records integration
- Telemedicine capabilities
- Automated appointment scheduling

2. Data Analytics

- Predictive health modeling
- Treatment effectiveness analysis
- Cost optimization algorithms
- Risk assessment tools
- Fraud detection systems

Member Benefits

1. Preventive Care

- Regular holistic health screenings
- Wellness programs
- Nutritional guidance
- Fitness assessments
- Mental health support

2. Treatment Support

- Care coordination
- Treatment planning
- Recovery management
- Rehabilitation programs
- Long-term health monitoring

3. Lifestyle Services

- Health education programs
- Wellness workshops
- Stress management
- Work-life balance support
- Community health initiatives

Corporate Programs

1. Employee Benefits

- Group coverage options
- Custom corporate packages
- Workplace wellness programs
- Employee assistance services
- Health risk assessments

2. Business Solutions

- Tailored insurance plans
- Cost-effective coverage
- Administrative support
- Health management tools
- Performance reporting

Future Developments

1. Expansion Plans

- New market entry
- Coverage enhancement
- Service expansion
- Technology integration
- Partner network growth

2. Innovation Pipeline

- AI-driven health predictions
- Personalized insurance products
- Advanced treatment coverage
- Enhanced digital services
- International care coordination
- New healing technologies and modalities

Regulatory Compliance

1. Insurance Standards

- Local insurance regulations
- International compliance
- Data protection laws
- Healthcare regulations
- Financial services rules

2. Quality Control

- Regular audits
- Performance monitoring
- Service level agreements
- Customer protection
- Risk management protocols

Operational Framework

1. Claims Processing

- Digital claim submission
- Fast-track processing
- Real-time status updates
- Direct provider payment
- Member reimbursement

2. Provider Network

- Qualified healthcare providers
- Quality assurance standards
- Service level agreements
- Performance monitoring
- Continuous improvement

This innovative insurance model represents a significant advancement in healthcare coverage, offering unprecedented accessibility, comprehensive care, and technological integration. By removing traditional barriers and exclusions while incorporating blockchain technology and token holder benefits, WholeCure is establishing a new paradigm in health insurance.



WHOLE
CURE

wholecure.co.uk